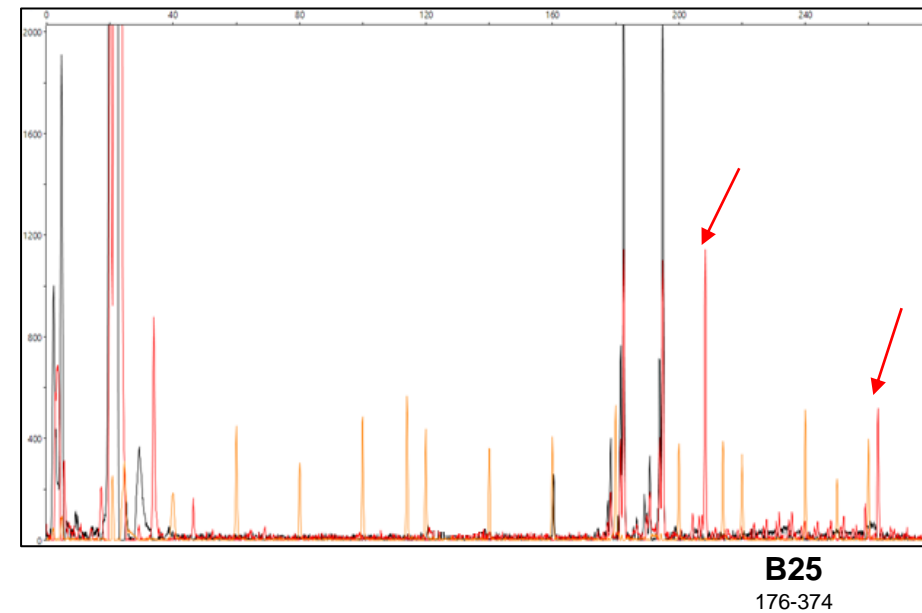
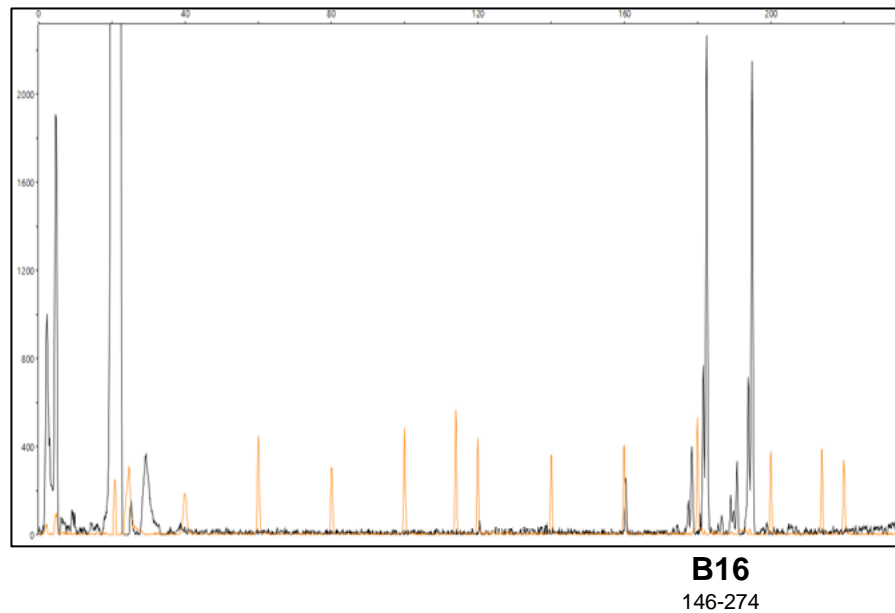
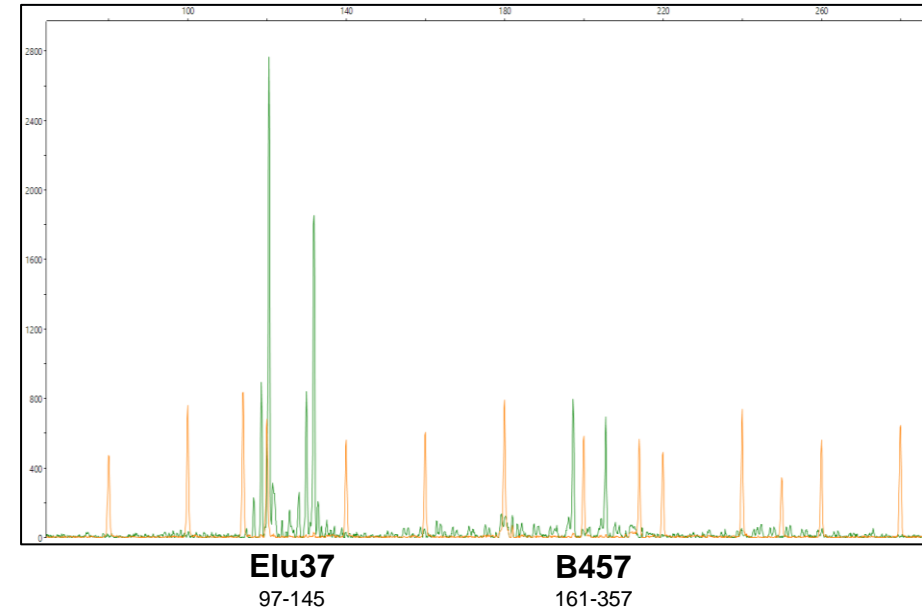
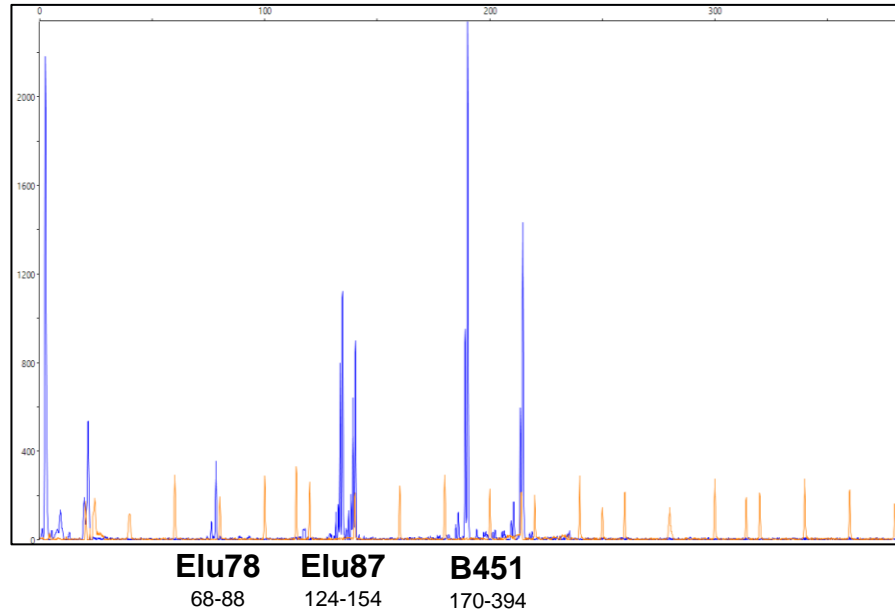
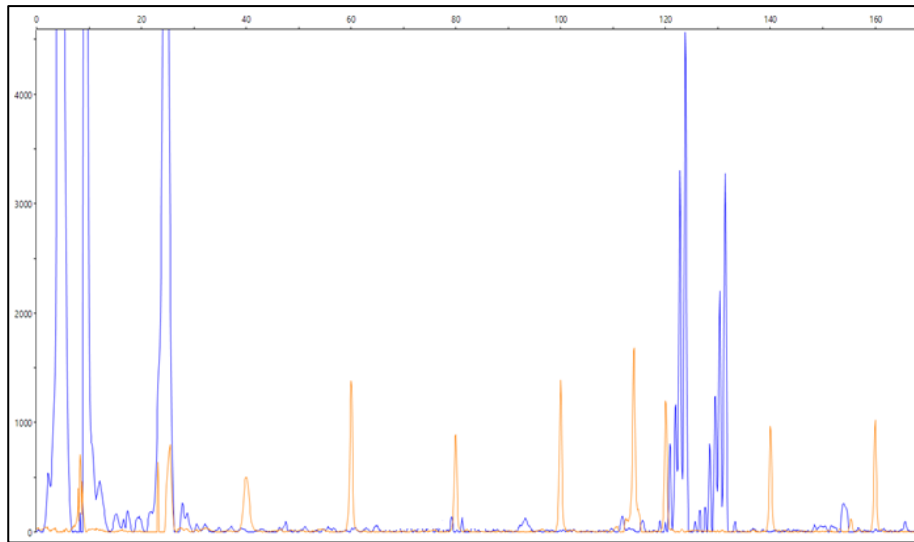


Supplementary 2. Chromatograms of the msDNA loci (Set 1 and Set 2) for genetic analyses of the *Esox lucius*. Color picks - FAM (blue), HEX (green), TAMRA (black) or ROX (red) - correspond to the msDNA loci PCR products (single pick indicating homzygote and two picks – heterozygote). Orange picks correspond to the GeneScan LIZ 600 size standard. Red arrows in the B25 (Set 1) chromatogram indicate amplified products of this locus (additionally highlighted TAMRA dye exhibits a tendency to raise the ROX dye, while analyzed; therefore it is presented in the picture to avoid misunderstanding).

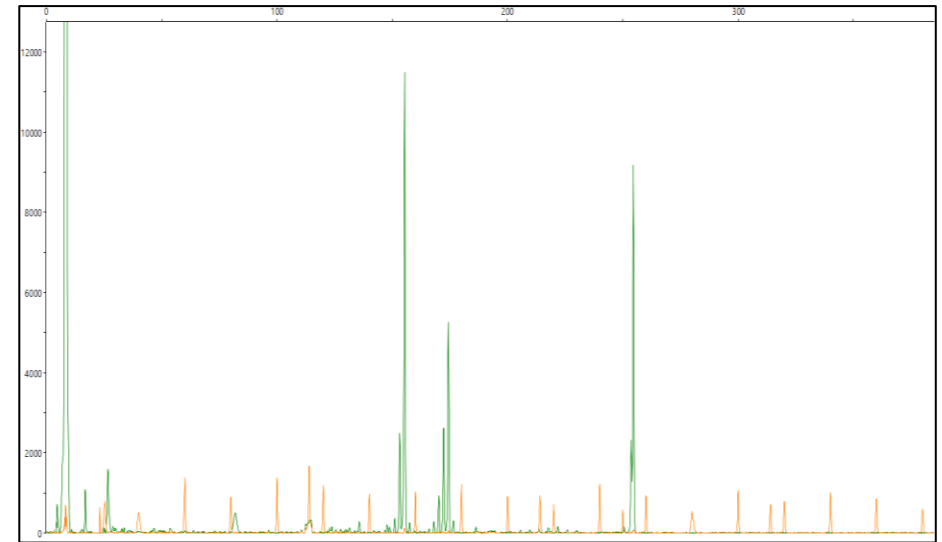
Set 1



Set 2

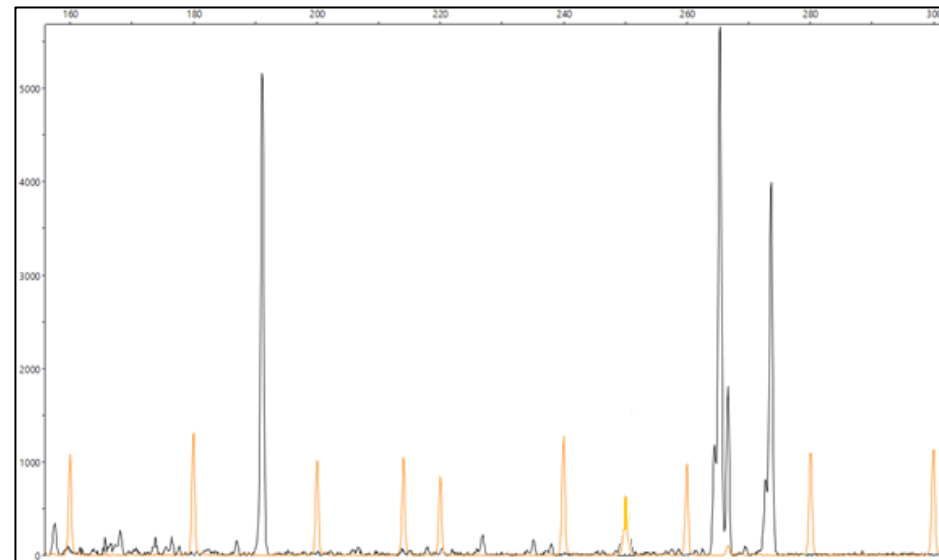


Elu19
90-148



Elu76
115-197

B422
206-354



Elu2
191-219

Elu7
227-275